

# Visiting Museum on the Mound



@museumonmound



Museumonthemound



MuseumontheMound

# Visiting Museum on the Mound

MUSEUM  
ON THE MOUND



- Museum on the Mound is open from 10am – 5pm, Tuesday-Friday and 1pm – 5pm on Saturday.
- It is free to enter.
- You do not need to book in advance.
- If you have any questions before you visit, you can call 0131 243 5464 or email [info@museumonthemound.com](mailto:info@museumonthemound.com).



- The door will be opened for you by one of our security guards.





- The museum is on one floor of the building.
- There are lifts, but you will not need to use them.

## MUSEUM LAYOUT

Throughout the galleries, a number of key objects and persons have been selected. They are identified as:



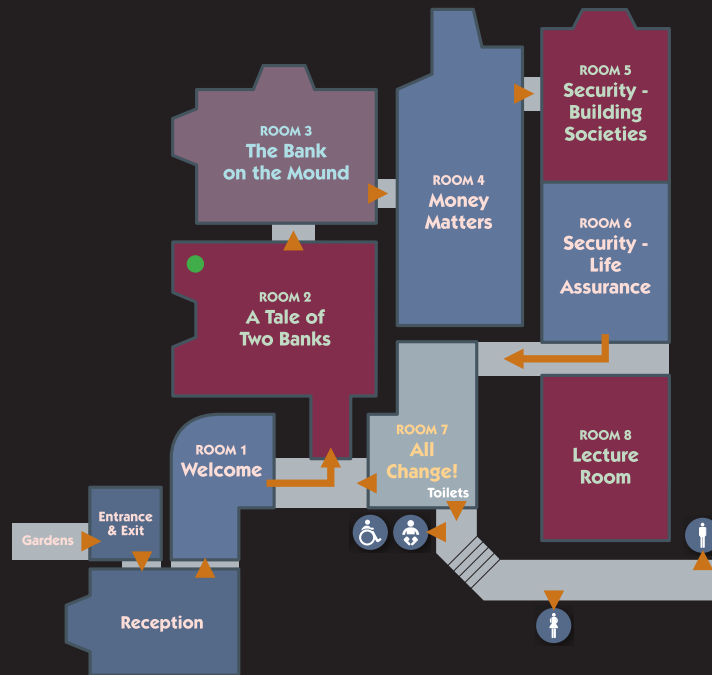
Key object



Key person



Quiet corner

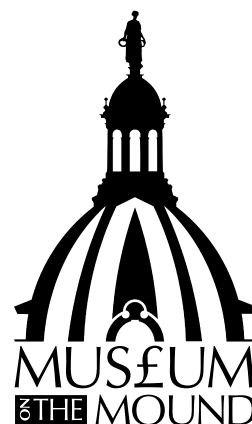


• You are here

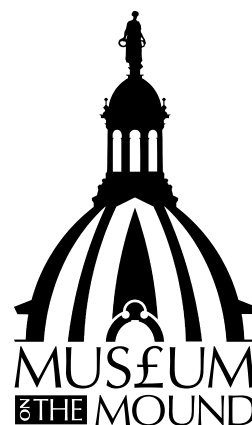
- There are floorplans located around the Museum.



- If you need some help during your visit or would like to ask a question, just speak to our friendly team wearing light blue shirts. They will have name badges.
- You can write a message down and show them if you prefer.



I would like to borrow a sensory bag.



Please show me where I can crack a safe.



- You can borrow some resources that might help you on your visit.
- We have ear defenders, communication cards and sensory bags.
- If the weather is nice, or if the Museum gets too loud, you can also borrow a sensory trail basket to use in our garden.



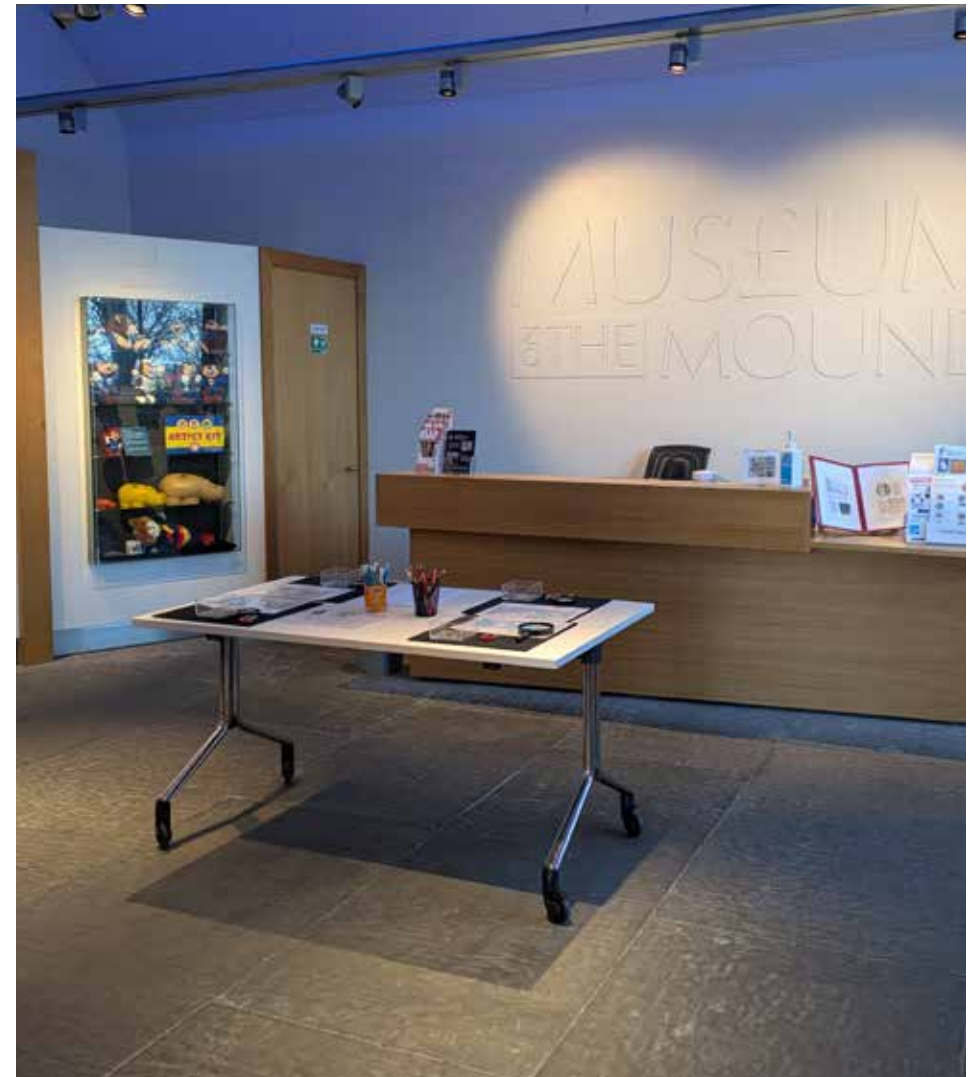


TOUCH THIS SCREEN



- There are many things to see and do at the Museum.
- There are signs that say what can and can't be touched.





- There are trails and activities available.
- There are handling tables in the Reception area with things I can explore and make. The handling table activities change every two weeks.

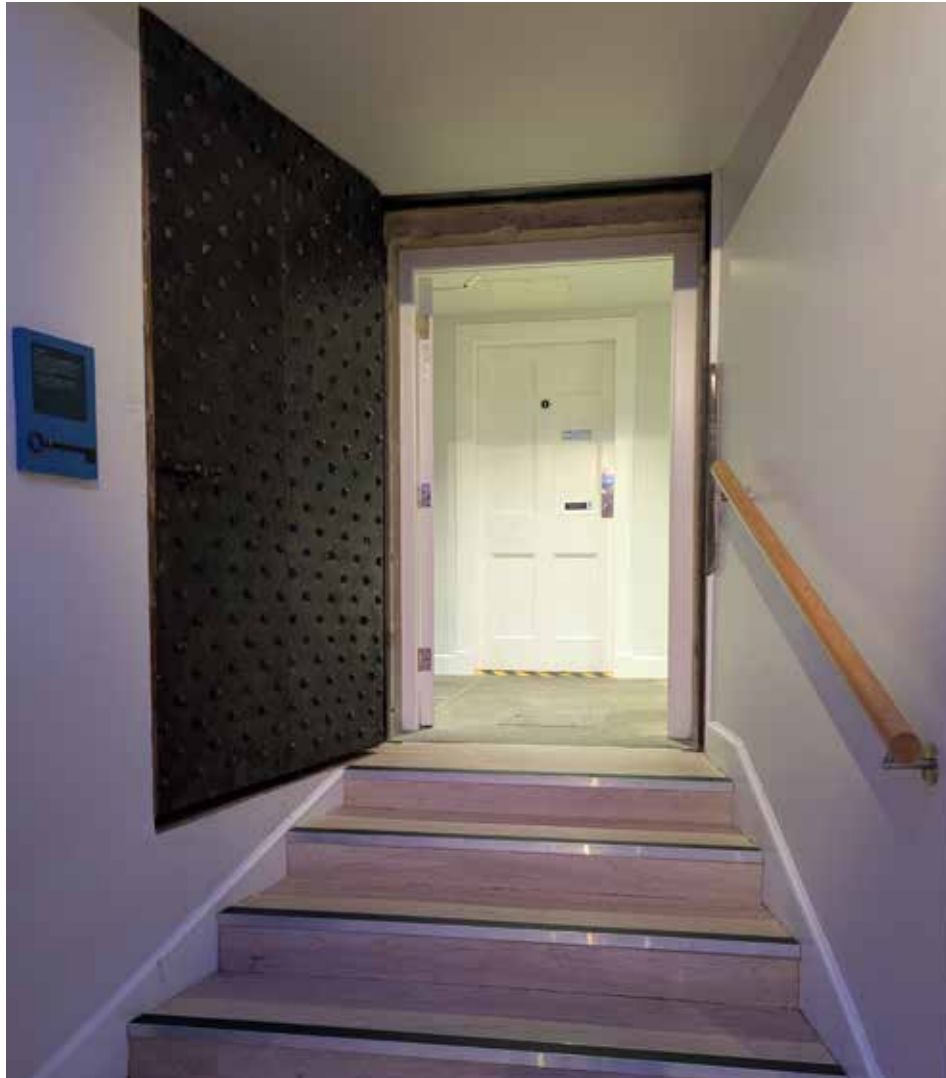


- The Museum is usually a quiet place. The quietest time to visit is Friday morning.
- Sometimes we have groups visit, and it can be noisy. If it is too noisy, you can talk to someone who works at the Museum. You can find them in the reception area near the entrance.



- There is a quiet area in the Museum that you can use.





- The toilets are near the end of the route around the building.
- There are steps to some toilets, but there is also a fully accessible toilet.
- We use paper towels rather than driers.



- You will exit through the same door you used to enter the Museum.
- This will take you back out to the garden. From there, you can easily visit the Royal Mile or Princes Street Gardens.



- We hope you enjoy your visit and would love to hear about your experience.
- You can get in touch by calling 0131 243 5454, by emailing [info@museumonthemound.com](mailto:info@museumonthemound.com) or through social media.



@museumonmound



Museumonthemound



MuseumontheMound