

This access statement does not contain personal opinions as to our suitability for those with access needs, but aims to accurately describe the facilities and services that we offer all our guests/visitors.

Access Statement for Museum on the Mound

Introduction

The Museum on the Mound is a 5 star city centre attraction, straddling the old and the new town of Edinburgh. The museum is situated on a hill with a steep gradual approach.

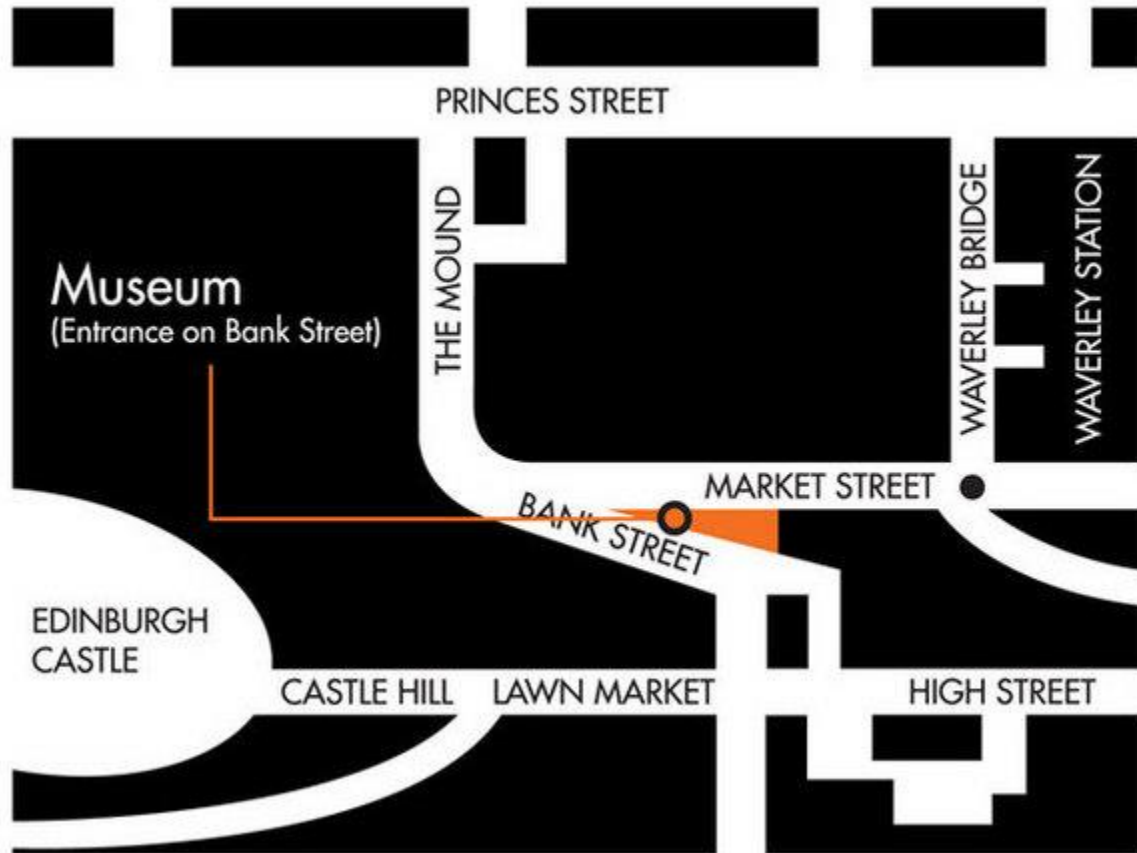
The museum is on one level, and staff are on hand throughout the museum should you require any assistance.

We look forward to welcoming you. If you have any queries or require any assistance please phone 0131 243 5464 or email info@museumonthemound.com.

Pre-Arrival

- By Train – We are only a few minutes walk from Edinburgh's Waverley Station. Take the Waverley Bridge exit, turn left and make your way up Market Street and North Bank Street.
- By Bus – Lothian Buses numbers 23, 27, 41, 42, and 45 stop at the Mound. Most of the Tour Buses and Airlink (100) services stop at the top of Market Street. Edinburgh's main bus station at St Andrew's Square is 5-10 minutes walk away.
- By Car – Follow routes for Edinburgh City Centre and City Centre Attractions (if using a satellite navigation or GPS system, use postcode EH1 2LP). There is no car park at the museum, but there is limited Pay and Display parking in Market Street, St Giles Street, and Chambers Street, (free all day Sunday). There are also large public car parks nearby at Waverly Station (New Street) and Castle Terrace.

- These details can also be found on the 'Visit Us' section of our website. <http://www.museumonthemound.com/visit>.
- Accessible taxis are available at St Andrew's Square bus station and Waverley railway station.



Car Parking and Arrival



- The parking on Market Street is on an incline. There is a wheelchair accessible ramp at the gate, and a level paved path leads to the main entrance. Our Security Guards are on hand at all times to open the door (1040mm/41ins wide) for visitors.

Main Entrance, Reception and Ticketing Area



- The main entrance/ reception area has respite seating and the reception desk is lower at one end for wheelchair access. A hearing loop system has been installed at reception. Large print guides are available here.

Attraction (displays, exhibits, rides etc.)

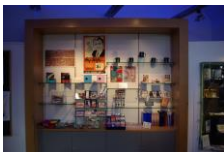


- The entire museum is step free with level access throughout. The minimum width between passageways in the museum is 960mm/37.5ins
- Respite seating is available throughout the museum.
- There are interactive activities throughout the museum; all can be accessed from a sitting or standing position.

Public Toilets

- We have one disabled unisex toilet which has level access from the museum. There is a two way swing door 900mm/35.5ins leading from the displays to the toilet area. The cubicle door is 870mm/34ins and opens outwards. The toilet is fitted with a red alarm cord.

Shop



- There is a shop with a range of souvenirs and books etc. which can be accessed directly from the main entrance. A low level desk and counter are provided. The counter has a hearing loop system installed and staff have been trained in its use. Staff are happy to offer assistance if required.

Grounds and Gardens



- There is a garden area which can be accessed from the main gate via a gentle sloping path. There are stunning views of the city from the seating area of the garden.

Additional Information

- We have a set of evacuation procedures – should you require it someone will assist you with evacuation either out of the building or to a refuge.
- We welcome trained assistance dogs. A water bowl is available on request.

Contact Information

Address (Inc postcode): Museum on the Mound Lloyds Banking
Group plc The Mound Edinburgh EH1 1YZ

Telephone: 0131 243 5464

Email: info@museumonthemound.com

Website: www.museumonthemound.com

Last updated 30th Oct 2014